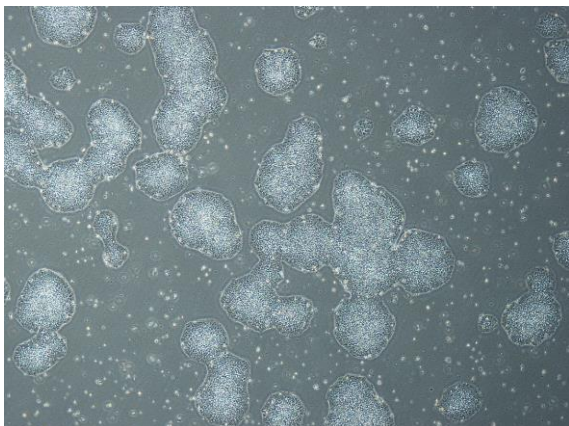
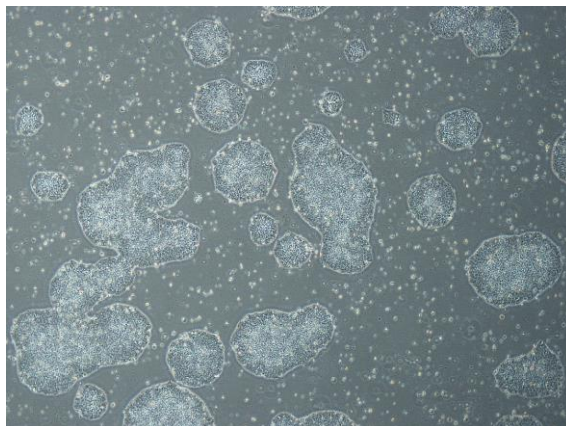


【 CiRA-j-1464 】 Morphology of iPSC colonies

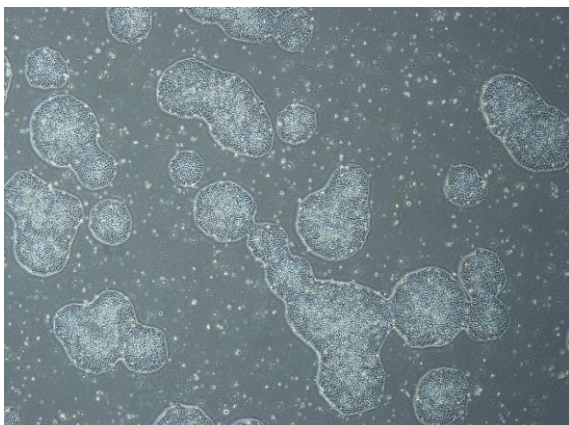
CiRA-j-1464-A: passage-3



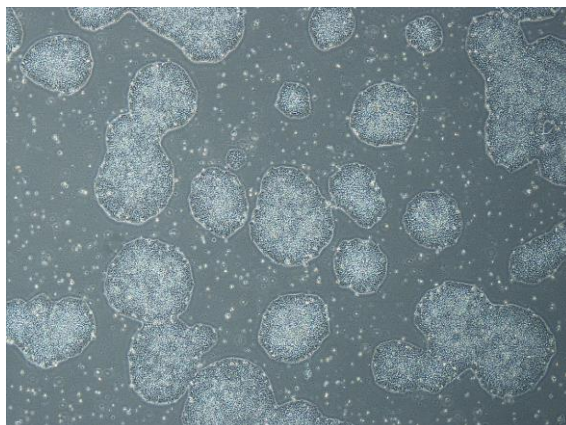
CiRA-j-1464-B: passage-3



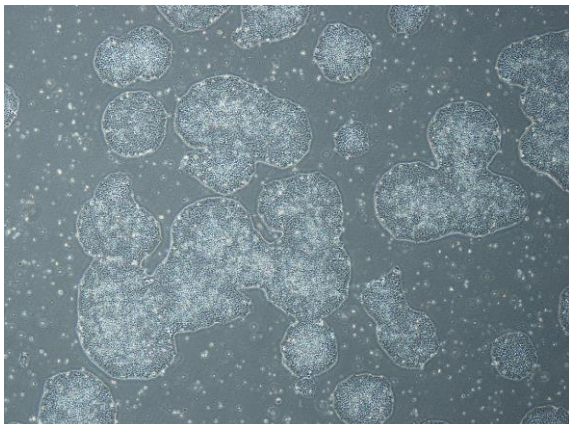
CiRA-j-1464-C: passage-3



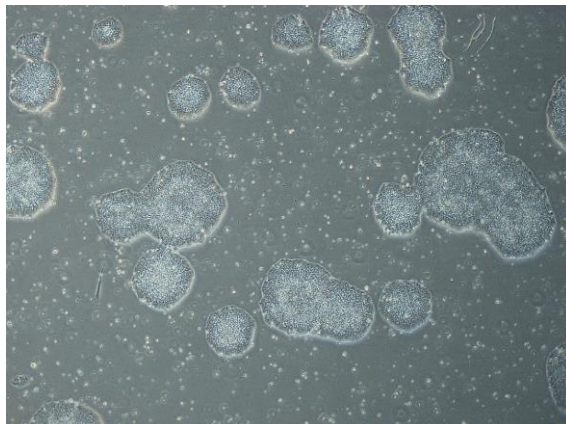
CiRA-j-1464-D: passage-3



CiRA-j-1464-E: passage-3



CiRA-j-1464-F: passage-4



(All images were captured at 4x magnification)